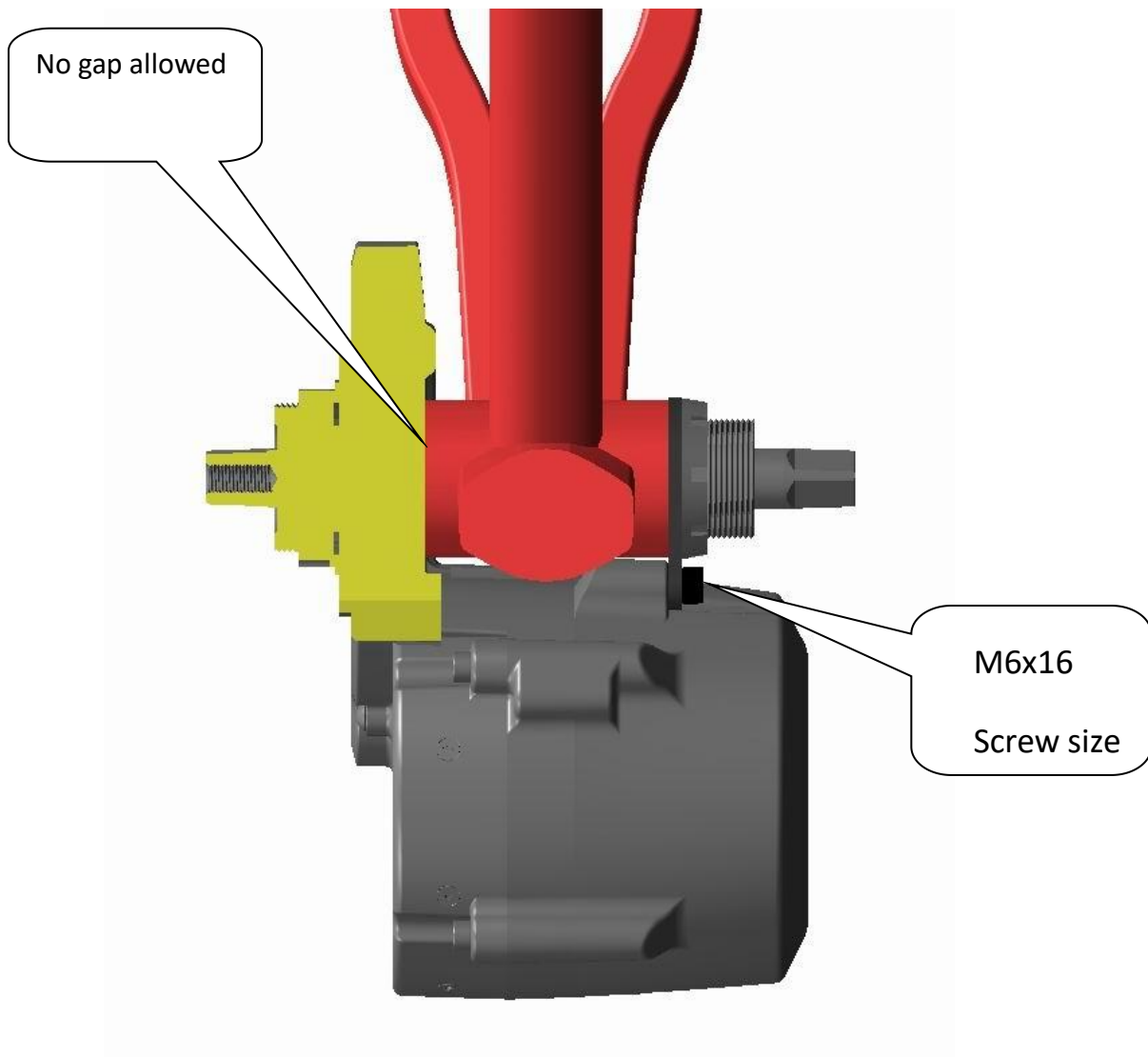


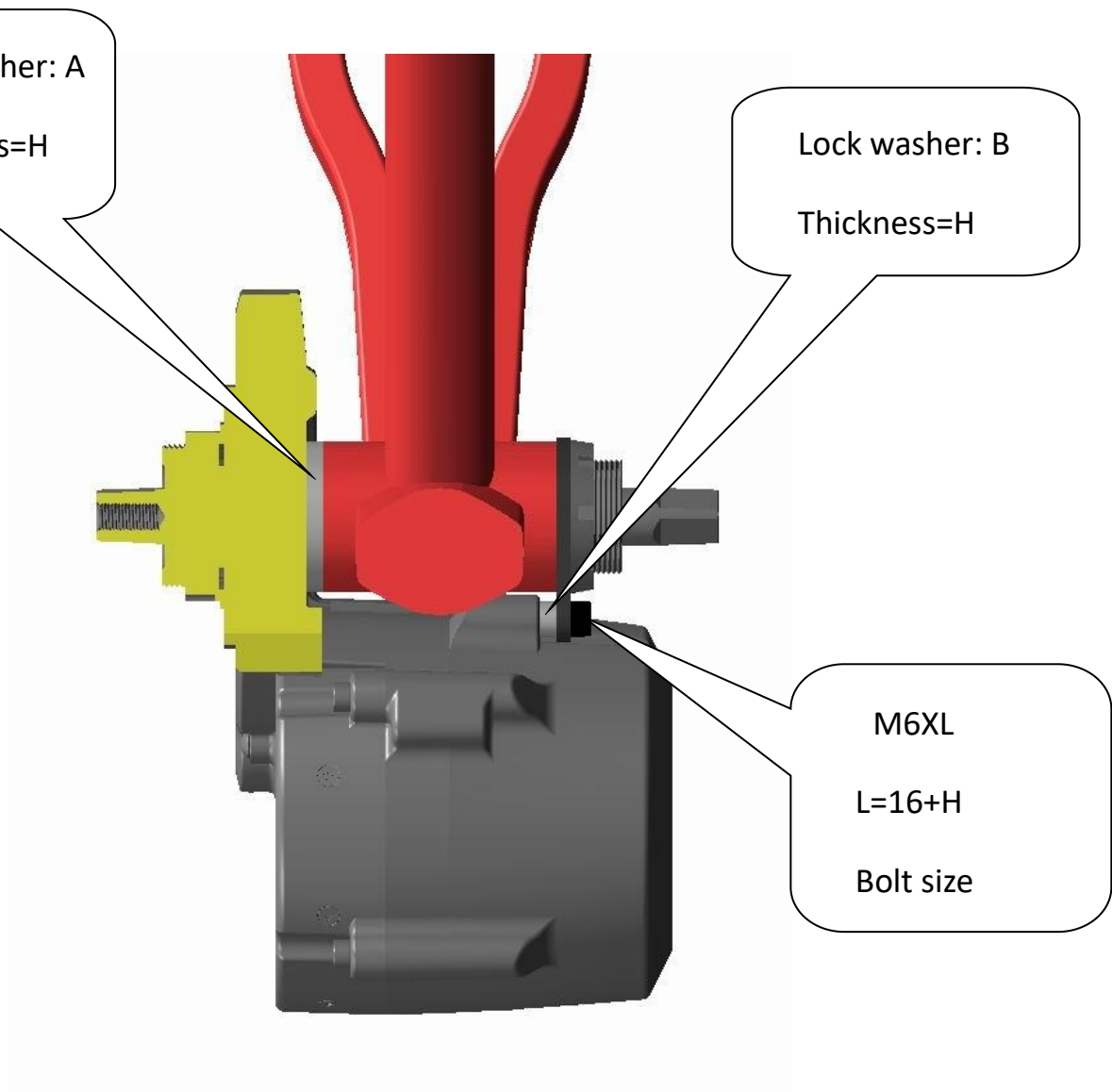
Mid-drive motor DM01, DM02

Installation Precautions

1 Mount without lock washer



2 Mount with lock washer



Note: the thickness H of lock washer A and lock washer B must be equal

3 Positioning of motor

The motor must be pushed to the end followed the direction of the arrow, make sure the motor close to the frame without gap , then tighten nut 1 and screw 2

